



DESIGN, BUILD, and MAINTAIN your stations through a single source.

The centerpiece of your LNG fueling station is its LNG dispensers. They need to be reliable, durable, accurate, attractive, and user-friendly. Designed and fabricated by industry-leading GP Strategies™, our stainless steel LNG dispensers withstand repetitive customer use and weather conditions, adhere to strict safety standards, and endure the test of time.

Fully Customizable and Durable LNG Dispensers

Our dispensers are easy to operate with an intuitive display that provides detailed instructions and status to users. With multiple configurations and options to choose from, GP Strategies can provide the precise dispenser for your fueling station's needs.

Features of GP Strategies Fuel Dispensers:

- Unique design allows meter element to cool down without flowing through the meter section, eliminating the potential for diverted measure flow (*patent pending*)
- User-friendly controls include a 4 line x 20 character display that provides instructions and status to the operator
- Customized graphics to reflect your company's brand and messaging
- Modbus communication with station pump controller
- Fully automatic controller inside dispenser
- Built-in gas and heat detector and emergency stop buttons
- Non-resettable totalizer for inventory management
- Multiple configurations and options:
 - Island- or wall-mount configuration
 - Single- or dual-hose configuration
 - Card reader and printer in dispenser
 - Interface with most third party card reader/fuel management systems

GP Strategies Alternative Fuels Division

GP Strategies Alternative Fuels Division is a recognized leader in the design, fabrication, construction, and maintenance of Liquefied Natural Gas (LNG), Liquefied to Compressed Natural Gas (LCNG), and Hydrogen (H₂) fueling facilities. Founded in 1966, our comprehensive services reflect industry best practices, proven processes, and lessons learned from decades of experience in the industry.



LNG Dispenser Configuration and Ordering Information

Part Number: **AB C DE FG H I J**

AB Type	C Meter	DE Size	FG Configuration	H Supply Hose Length	I Vent Hose Length	J Nozzle
A3 LNG	1 GPX	04 ½" (5-25 lbm/min)	10 Island Mount, Single Hose, No Card Reader	1 10-ft. LNG Hose	0 No Vent Hose	1 JC Carter Nozzle
AX Specify	2 Coriolis	08 1" (25-250 lbm/min)	11 Island Mount, Single Hose, w/Communication to External Certified Card Reader	2 12-ft. LNG Hose	1 10-ft. Vent Hose	2 Macro Technologies Nozzle
		16 2" (70-950 lbm/min)	12 Island Mount, Single Hose, w/Card Reader in Dispenser	3 15-ft. LNG Hose	2 12-ft. Vent Hose	3 CGA Nozzle
		24 3" (150-1500 lbm/min)	13 Island Mount, Single Hose, w/Card Reader and Printer in Dispenser	4 20-ft. LNG Hose	3 15-ft. Vent Hose	4 150-lb. Flange
			15 Island Mount, Dual Hose, No Card Reader	X Specify	4 20-ft. Vent Hose	X Specify
			16 Island Mount, Dual Hose, w/Communication to External Certified Card Reader		X Specify	
			18 Island Mount, Dual Hose, w/Card Reader in Dispenser			
			19 Island Mount, Dual Hose, w/Card Reader and Printer in Dispenser			
			W0 Wall Mount, Single Hose, No Card Reader			
			W1 Wall Mount, Single Hose, w/Communication to External Certified Card Reader			
			W2 Wall Mount, Single Hose, w/Card Reader in Dispenser			
			W3 Wall Mount, Single Hose, w/Card Reader and Printer in Dispenser			
			W5 Wall Mount, Dual Hose, No Card Reader			
			W6 Wall Mount, Dual Hose, w/Communication to External Certified Card Reader			
			W8 Wall Mount, Dual Hose, w/Card Reader in Dispenser			
			W9 Wall Mount, Dual Hose, w/Card Reader and Printer in Dispenser			
			XX Specify			

Part Number Example: **A3108I9111**

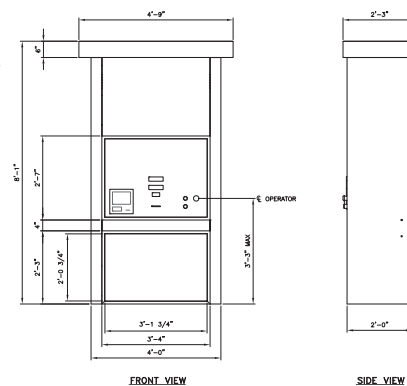
LNG, GPX, 1" (25-250 lbm/min), Island Mount, Dual Hose, w/Card Reader and Printer in Dispenser, 10-ft LNG Hose, 10-ft Vent Hose, JC Carter Nozzle

Specifications

- Accuracy: +/- 1%
- Approvals NTEP (pending)
- NIST Handbook 44 Section 3.37
- NFPA 52, 70
- ASME B31.3
- 2010 ADA

Requirements

- Power: 120 VAC 10A
- Compressed Air: 90 psig, 10 SCFM
- Purge Air: 30 CFM @ 2" water
- Communications: MODBUS



GP Strategies Corporation
2835 Progress Place
Escondido, CA 92029



Knowledge. Performance. Impact.

altfuels.gpstrategies.com
1.888.843.4784
energyservices@gpstrategies.com

